

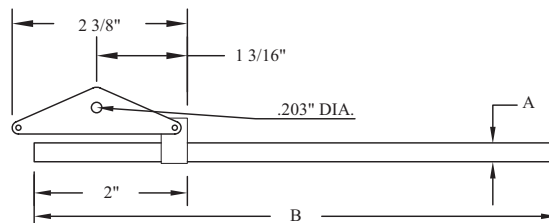
# Flameless Electric Air Heaters: Air Heater Accessories

All shields made with 300 series stainless steel.

## Outer Shield Open

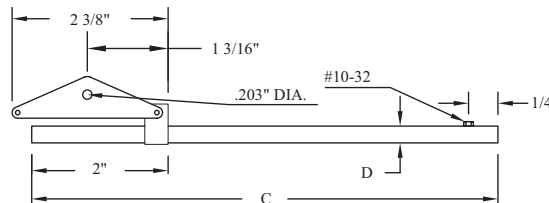
Provides better heating efficiency and protection against accidental breakage.

Used with Model #	Part Number	A	B
001-10001	002-10012	1/2"	6-3/4"
001-10003	002-10011	1/2"	7-5/8"
001-10005	002-10013	1/2"	3-3/4"
001-10007	002-10013	1/2"	3-3/4"
001-10009	002-10014	11/16"	6-3/4"



## Outer Shield Open with Thermocouple Port

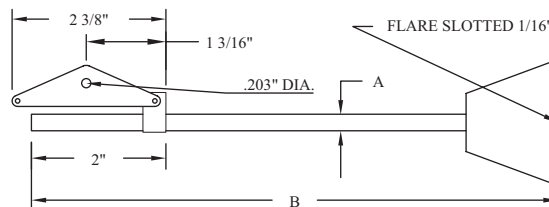
Used with Model #	Part Number	C	D
001-10001	002-10082	7-3/8"	1/2"
001-10003	002-10083	8-1/4"	1/2"
001-10005	002-10084	4-3/8"	1/2"
001-10007	002-10084	4-3/8"	1/2"
001-10009	002-10085	7-3/8"	11/16"



## Outer Shield Flare

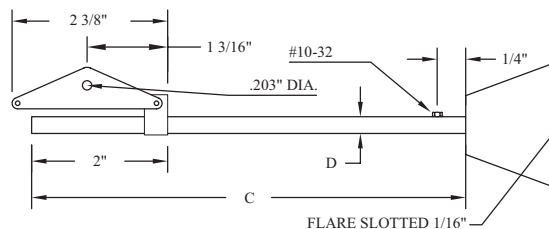
Provides a wider heat distribution area. For use with open heaters only.

Used with Model #	Part Number	A	B	Flare Opening
001-10001	002-10015	1/2"	8-3/8"	2" x .062"
001-10003	002-10016	1/2"	9-1/4"	2" x .062"
001-10005	002-10017	1/2"	5-3/8"	2" x .062"
001-10007	002-10017	1/2"	5-3/8"	2" x .062"
001-10009	002-10018	11/16"	8-3/8"	2 1/2" x .062"



## Outer Shield Flare with Thermocouple Port

Used with Model #	Part Number	C	D	Flare Opening
001-10001	002-10077	9"	1/2"	2" x .062"
001-10003	002-10078	9-7/8"	1/2"	2" x .062"
001-10005	002-10079	6"	1/2"	2" x .062"
001-10007	002-10079	6"	1/2"	2" x .062"
001-10009	002-10080	9"	11/16"	2 1/2" x .062"



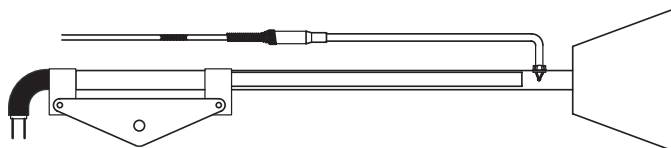
## Thermoplastic Male Connectors 1/4-18NPT

Part Number	Use with
002-10022	1/4" tubing
002-10024	3/8" tubing

Part Number	Use with
002-10021	1/4" tubing
002-10023	3/8" tubing

## Polyethylene Tubing

Part Number	O.D.
002-10019	3/8"
002-10020	1/4"



## Thermocouples Exposed Junction

3 Ft. standard length with steel braid.

Type	Part Number
"J"	002-10087
"K"	002-10088